

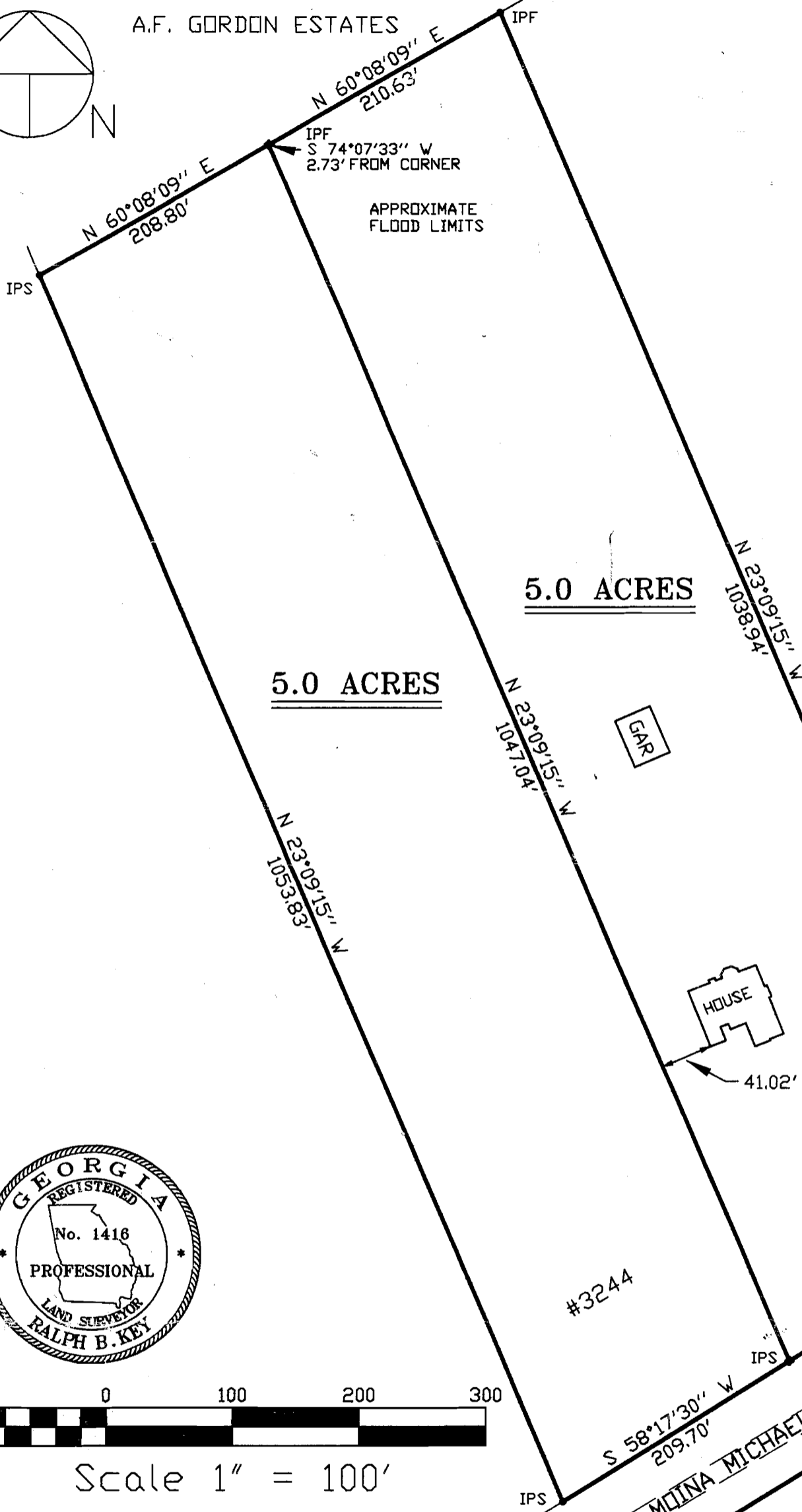
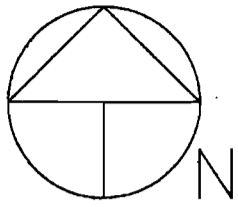
THE FIELD DATA UPON WHICH THIS PLAT IS BASED HAS A CLOSURE OF 1 FOOT IN 10,000 FEET, AND ANGULAR ERROR OF 04 SECONDS PER ANGLE POINT AND WAS ADJUSTED USING THE LEAST SQUARES METHOD. THIS PLAT HAS BEEN CALCULATED FOR CLOSURE AND FOUND TO BE ACCURATE TO 1 FOOT IN 100,000 FEET. AN ELECTRONIC TOTAL STATION AND A 100' CHAIN WERE USED TO GATHER THE INFORMATION USED IN THE PREPARATION OF THIS PLAT. NO STATE PLANE COORDINATE MONUMENT FOUND WITHIN 500 FEET OF THIS PROPERTY.

I HAVE THIS DATE, EXAMINED THE "FLOOD INSURANCE RATE MAP" AND IN MY OPINION THE REFERENCED PARCEL IS IN AN AREA HAVING SPECIAL FLOOD HAZARDS.

MAP ID: 13297 C 0140 B EFFECTIVE DATE: 02/16/1990

N\F

A.F. GORDON ESTATES



LEGEND

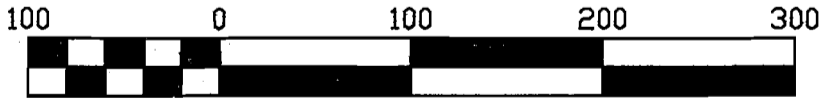
- CMP CORRUGATED METAL PIPE
- RCP REINFORCED CONCRETE PIPE
- DE DRAINAGE EASEMENT
- SSE SANITARY SEWER EASEMENT
- BSL BUILDING SETBACK LINE
- IPF IRON PIN FOUND
- IPS IRON PIN SET
- IPC IRON PIN CALCULATED
- CB CATCH BASIN
- JB JUNCTION BOX
- MH MAN HOLE
- HW HEAD WALL
- POB POINT OF BEGINNING
- R/W RIGHT-OF-WAY
- PP POWER POLE
- SP SERVICE POLE
- LP LAMP POLE
- DHUL OVERHEAD UTILITY LINE
- OT OPEN TOP
- CT CRIMP TOP
- RB RE-BAR
- CL CENTER LINE
- D. B. DEED BOOK
- P. B. PLAT BOOK
- PG. PAGE
- CONC CONCRETE
- FH FIRE HYDRANT

N\F

A.F. GORDON ESTATES
LOT 2A

5.0 ACRES

5.0 ACRES



Scale 1" = 100'

IN MY OPINION, THIS PLAT IS A CORRECT REPRESENTATION OF THE LAND PLATTED AND HAS BEEN PREPARED IN CONFORMITY WITH THE MINIMUM STANDARDS AND REQUIREMENTS OF LAW.

Ralph B. Key

RALPH B. KEY, GA. R.L.S. NO. 1416

THIS PLAT WAS PREPARED FOR THE EXCLUSIVE USE OF THE PERSON, PERSONS, OR ENTITY NAMED HEREON. THIS PLAT DOES NOT EXTEND TO ANY UNNAMED PERSON, PERSONS, OR ENTITY WITHOUT EXPRESS RECERTIFICATION BY THE SURVEYOR NAMING SAID PERSON, PERSONS, OR ENTITY.

SHEET 1 of 1	SURVEY		DATE	DRAWN	PLOTTED	SURVEYED	DILLS ~ JONES & ASSOCIATES, INC.	REVISION	DATE
	LOT 1 & 2								
A. F. GORDON ESTATES							P.O. BOX 1618 ~ LOGANVILLE, GEORGIA 30052-1618 PH. 770-466-9975 ~ FAX 770-466-9188		
LOCATED IN: LAND LOT 83 OF THE 2ND LAND DISTRICT WALTON COUNTY, GEORGIA									
APPROVED: RBK			SCALE: 1" = 100'						

A TOPCON GTS-2B TOTAL STATION was used to obtain the linear and angular measurements used in the preparation of this plat.

The field data upon which this plat is based has a closure precision of one foot in 22,500 feet and an angular error of 2" per angle point and was adjusted using the COMPASS rule.

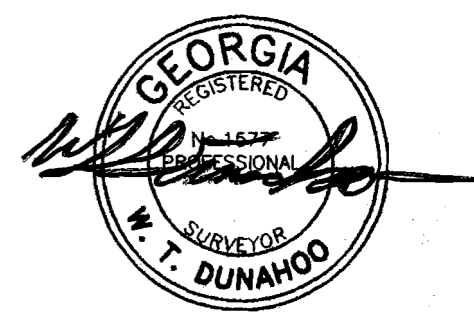
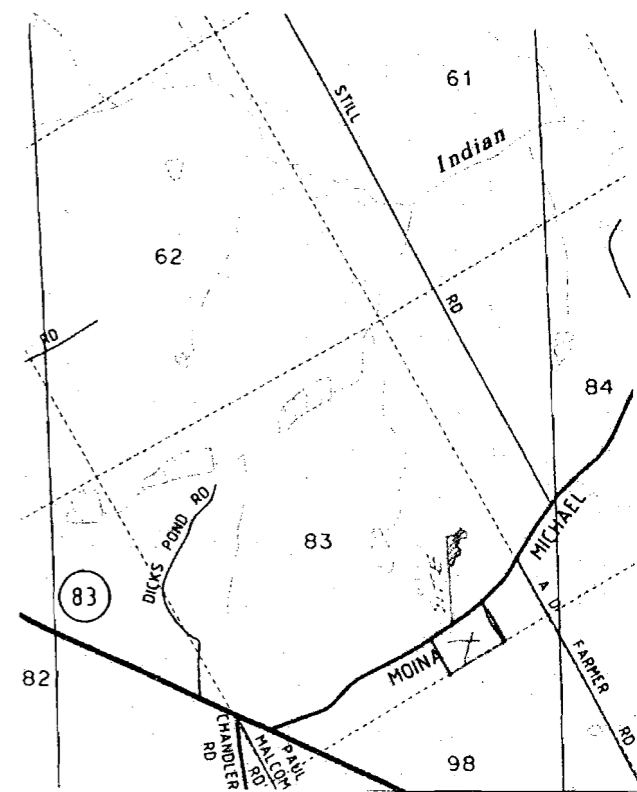
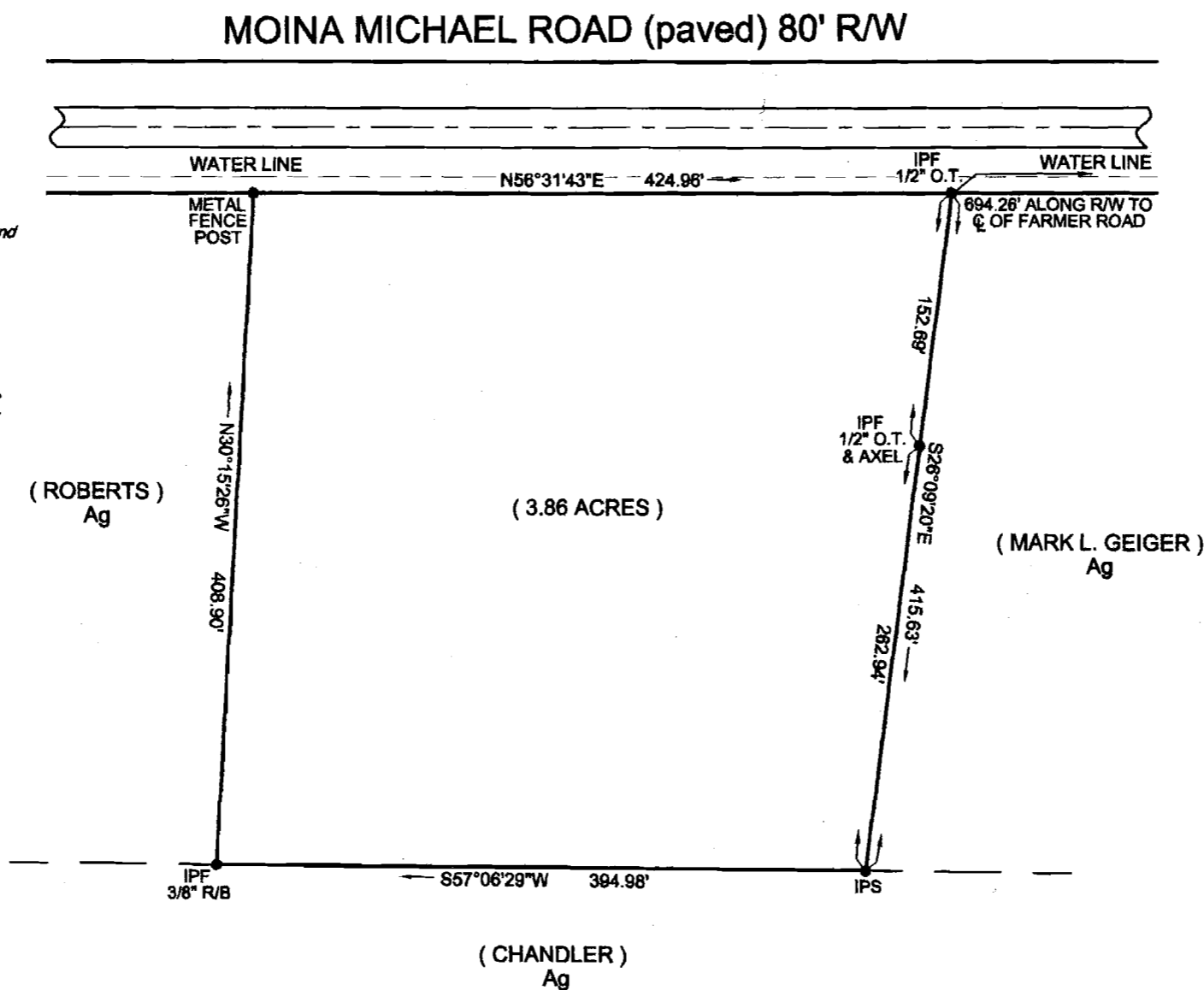
This survey has been calculated for closure and is found to be accurate within one foot in >108,000 feet.

(a) Certificate of Health Department, directly on the Final Plats as follows:
 "The lots shown hereon have been reviewed by the Walton County Health Department and are approved for development. Each lot is to be reviewed by the Walton County Health Department and approved for septic tank installation prior to the issuance of a building permit."

Health Department Officer _____ Date _____

(b) Certificate of Approval for recording:
 "I hereby certify that the subdivision plat shown herein has been found to comply with the Land Development Ordinance of Walton County, Georgia, and that is hereby approved for recording in the office of the Clerk of Superior Court of Walton County, Georgia."

Director, Walton County Planning & Development _____ Date _____



NO FLOOD HAZARD
 AS PER FIRM MAP # 13297C0140-B
 DATED 2-16-90

MAP & PARCEL # C194-29

BUILDING SETBACK LINES:
 FRONT- 60'
 BACK - 40'
 SIDES- 20'



- REFERENCE -
 SURVEY FOR MARK GEIGER BY KENNETH G. SIMS DATED
 4/22/98 & 11/15/02.

EXEMPTION PLAT FOR		STATE OF GEORGIA		
CHRIS FOLGMAN		3190 HWY. 78 LOGANVILLE, GA 30052 770-466-4663		
		LAND LOT 83 - 2ND DISTRICT		
CITY	GMD	COUNTY	SCALE	DATE
		WALTON	1"=100'	09-27-05
W. T. DUNAHOO AND ASSOCIATES				
P.O. BOX 183 302 W. MAY ST.		(770) 867-3911		WINDER, GEORGIA

IPF- IRON PIN FOUND
 IPS- IRON PIN SET - 1/2" OPEN TOP

C:\Program Files\AutoCAD R14\Dan's AutoCAD\Exemption Plat's\Chris Folgman.dwg